



we  clean

User Guide

Vax Service line AU: 1300 361 505

NZ: 0800 800 900

Bagless Cylinder

MACH™1



Get Cleaning...

What's your Vax's model number?

V M C P 1 4 0 0 / V M A T 1 4 0 0

What's your serial number? (Located on the base of the machine)

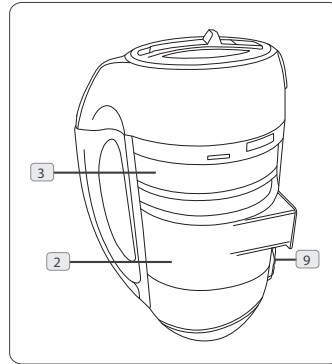
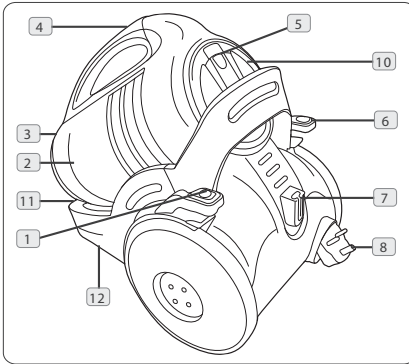
■ - ■ ■ ■ ■ ■ ■ - ■ ■ - ■ ■ - ■ ■ - ■ ■ ■ ■ ■ ■

Note these down in case you need them in future. Please keep instructions for further use.

www.vax.com.au

VMCP1400 / VMAT1400

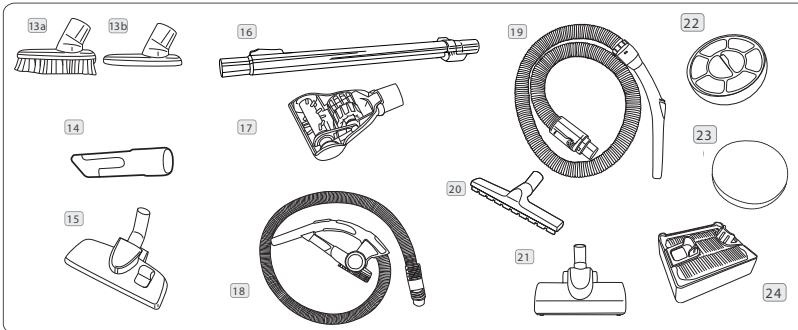
Machine Overview



1. Machine Overview

The Unit

- | | | |
|-----------------------------------|---------------------------------|---------------------------------|
| 1 On/Off Button | 5 Dirt Container Release Button | 9 Dirt Bin Quick Release Button |
| 2 Dirt Container | 6 Auto Cord Rewind | 10 Pre-Motor Filter Cover |
| 3 Cyclone Separator | 7 Floor Tool Parking Slot | 11 Hose Inlet |
| 4 Dirt Container and Carry Handle | 8 Plug | 12 Post Motor Filter Cover |



2. Accessories Overview

- 13 2-in-1 Tool
- 14 Crevice Tool
- 15 Combination Floor Tool (Not inc. on model VMAT1400)
- 16 Telescopic Tube
- 17 TurboTool
For pet hair, stair and upholstery cleaning.
NOTE: Do not use the Turbo tool on suede and leather surfaces.
- 18 Hose
- 19 Stretch Hose (VMAT1400 ONLY)

NOTE: This should not be used as the main hose. The stretch hose is recommended to be used for stair cleaning. The unit should always be positioned at the bottom of the stairs

- 20 Hard Floor Tool (VMAT1400 ONLY)
- 21 Turbo Brush (VMAT1400 ONLY)
NOTE: Not recommended for hard floors. For large carpeted areas.
- 22 Foam Pre-Motor Filter
- 23 Fabric Pre-Motor Filter
- 24 HEPA Post-motor Filter
Anti bacterial HEPA Post-Motor Filter

General Safety Information


FOR HOUSEHOLD USE ONLY.


When using the vacuum cleaner, basic safety precautions should always be observed, including the following:


1. Only use the vacuum cleaner indoors on dry surfaces.
2. Turn off the vacuum cleaner controls before disconnecting or connecting from the mains supply.
3. Always unplug the vacuum cleaner before connecting or disconnecting the vacuum hose and accessories.
4. Children should be supervised to ensure that they do not play with the appliance.
5. This appliance is not intended for use by persons (including children) with reduced physical, sensory or mental capabilities, or lack of experience and knowledge, unless they have been given supervision or instruction concerning use of the appliance by a person responsible for their safety.
6. Use only as described in this manual. Use only Vax recommended attachments.
7. Do not use the vacuum cleaner if it has been dropped, damaged, left outdoors or dropped into water. Do not use the vacuum cleaner with a damaged cord or plug. If the supply cord is damaged, it must be replaced by the manufacturer, its service agent or similarly qualified persons in order to avoid a hazard.
8. Do not pull or carry by cord. Do not use the cord as a handle, close a door on the cord or pull cord around sharp edges or corners. Do not run the vacuum cleaner over the cord. Keep the cord away from heated surfaces.
9. Do not handle the plug or vacuum cleaner with wet hands. Do not use outdoors or on wet surfaces.
10. Do not put any objects into openings. Do not use with any openings blocked and do not restrict airflow. Keep all openings free of dust, lint, hair or anything that might reduce airflow.
11. Keep hair, loose clothing, fingers and all parts of the body away from openings and moving parts.
12. Do not pick up hot coals, cigarette butts, matches or any hot, smoking or burning objects.
13. Do not pick up flammable or combustible materials (lighter fluid, petrol, kerosene etc.) or use

in the presence of explosive liquids or vapours.

14. Do not vacuum up harmful or toxic material (chlorine, bleach, ammonia, drain cleaner etc.).
15. Do not vacuum up hard or sharp objects such as glass, nails, screws, coins, etc.
16. Do not use without ALL of the filters in place.
17. Take extra care when vacuuming on stairs.
18. Keep vacuuming area well lit.
19. Store the vacuum cleaner in a cool, dry area.
20. Turn off the on/off switch before unplugging the vacuum cleaner
21. Use only SAA approved 10 amp extension cords. Non-approved cords may overheat. Care should be taken to arrange the cord so that the cord cannot be tripped over.

 **WARNING:** Always switch off and unplug the vacuum cleaner from the electrical outlet before assembling, opening or emptying the dirt container, or before connecting/disconnecting the attachments.

 **CAUTION:** The vacuum cleaner is a very powerful unit. Before plugging the cord into the electrical outlet, make sure the switch is in the 'off' position. Hold the vacuum cleaner firmly when starting and in use.

 **IMPORTANT:** If the inlet, hose or telescopic tube is blocked, switch off the vacuum cleaner and remove the blockage(s) before re-starting the vacuum cleaner.

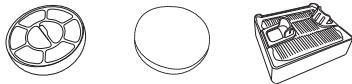
 **IMPORTANT:** Cleaning filters improves vacuum performance. Vax recommends that your filters should be checked and cleaned periodically. If your filters are washable make sure they are completely dry before inserting back into the vacuum cleaner.

This vacuum cleaner is intended for household use only and NOT for commercial or industrial use.

PLEASE KEEP INSTRUCTIONS FOR FURTHER USE.

Operation

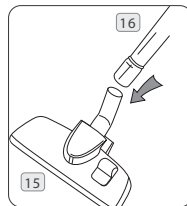
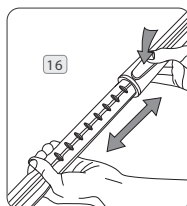
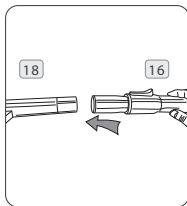
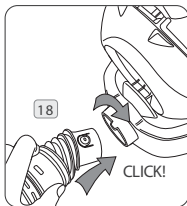
⚠ Your Filters:



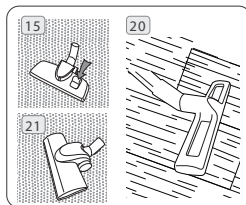
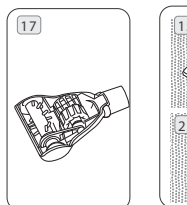
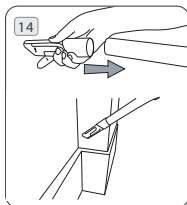
KEEP YOUR VAX LIKE NEW!

- ⚠ **IMPORTANT:** The condition of the filters affects the performance of your vacuum cleaner. Please check and wash filters periodically (depending on level of use). For full cleaning instructions see page 6.
- ⚠ **IMPORTANT:** Do not use the vacuum cleaner without all the filters in place.

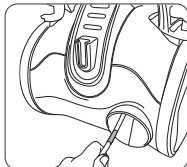
Assembling your vacuum cleaner



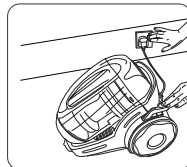
Choose the attachments for the job:



Operating the appliance



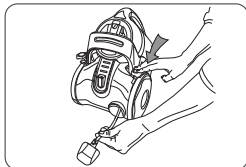
- ⚠ **WARNING:** Always switch off and unplug the vacuum cleaner from the electrical outlet before assembling, opening or emptying the dirt container, or before connecting/disconnecting the attachments.



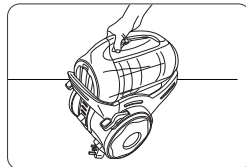
NOTE: Fully unwind the power cord. A yellow mark on the power cord indicates the recommended cord length. Do not exceed the cord length beyond the red mark.

Packing away and storage

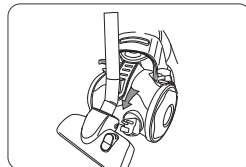
- ⚠ **IMPORTANT:** Always unplug the vacuum from the electrical outlet and rewind the power cord as directed before storing.



NOTE: When rewinding the power cord, guide the cord with one hand. This will prevent the cord from whipping which could cause damage or injury.



NOTE: For convenience there is a parking slot located at the rear of the vacuum cleaner where the floor tool and hose can be parked for carrying and storage.

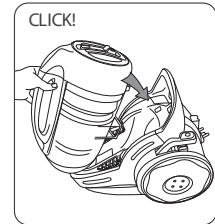
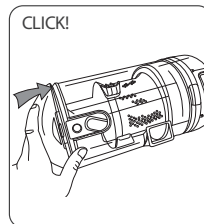
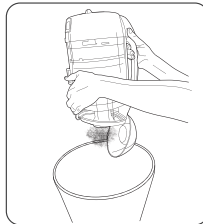
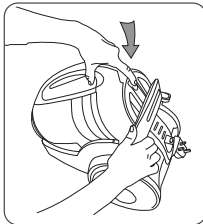


Maintenance

Dirt Container: Maintenance

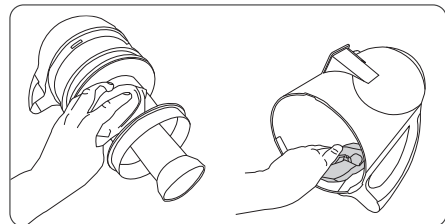
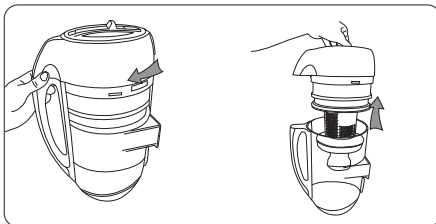
- ⚠ **IMPORTANT** : Always switch off and unplug the vacuum cleaner from the electrical outlet before removing the Dirt Container.
- ⚠ **IMPORTANT** : Do NOT use the vacuum without ALL of the filters in place.

Emptying the Dirt Container



Cleaning the Cyclone Separator

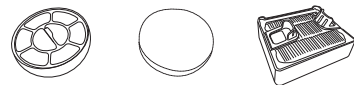
- ⚠ **IMPORTANT** : Remove the Dirt Container from the unit and dispose of the dirt inside the container before cleaning.
- ⚠ **IMPORTANT** : The cyclone separator should not be submerged in water.



When the cyclone separator has been cleaned and dried completely, re-attached the dirt container to the lid of the separator and return the dirt container to the unit.

The Filters: Maintenance

NOTE: Do not use any detergents or boiling water to wash the filters.



- ⚠ **IMPORTANT**: Your vax vacuum cleaner is fitted with high performance filters it is essential that these are well maintained and cleaned according to the following instructions.

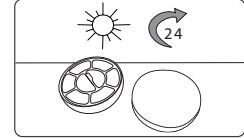
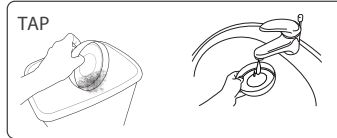
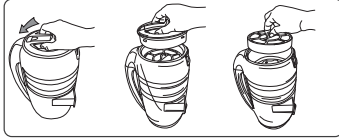
Vax recommends that the pre- and post-motor filter should be checked and cleaned periodically depending on the frequency of use and the volume of dirt being picked up on each occasion.

NOTE : Both Pre- and Post-Motor Filters can be rinsed in warm water (max 40°C). Allow to air dry for 24 hours before replacing. Do NOT use any detergents or boiling water to wash the filters.

Once completely dry, return the pre-motor filters and case to the vacuum cleaner. Replace the pre-motor filter cover before restarting the vacuum cleaner.

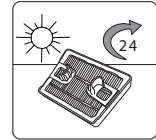
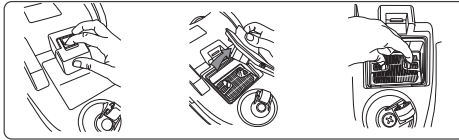
Maintenance

Cleaning the Pre- Motor Filter



Cleaning the Post- Motor Filter

NOTE : This is located at the base of the vacuum cleaner.



Cleaning Blockages

⚠ WARNING : To reduce the risk of electric shock, the power cord must be disconnected before performing maintenance/ troubleshooting checks. Turn the vacuum cleaner off and unplug from the electrical outlet.

Hose Blockages

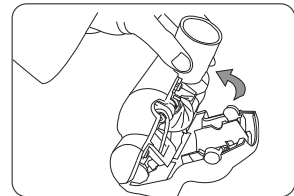
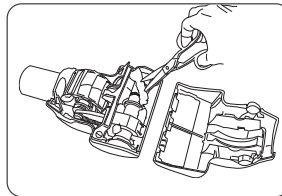
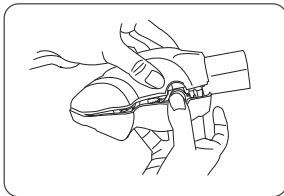
The flexible hose may be disconnected from the vacuum cleaner. Carefully remove any blockages found and reconnect hose securely.

Accessory Blockages

Remove accessory from hose handle/ tube. Carefully remove the blockage and return to the cleaner.

Cleaning Debris from the Turbo Tool (VMCP1400, VMAT1400)

NOTE : Switch the cleaner off and disconnect the power plug from the electrical outlet.

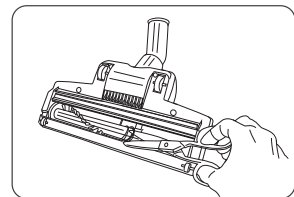


Removing debris from the TurboBrush (VMAT1400 ONLY)

The brushbar will stop rotating if it is blocked during operation by vacuuming up foreign objects, or if strands of carpet are wrapped around it.

Switch the vacuum cleaner off and disconnect the power plug from the electrical outlet.

Lay the TurboBrush floor head on a flat surface and turn over to expose the brushbar. Using a pair of scissors, cut through any threads or hairs caught by the brushbar that have wrapped around the guides.



FAQs



WARNING: to reduce the risk of personal injury, unplug the vacuum cleaner before performing maintenance/troubleshooting checks.

Is there an accessory missing?

- Check the 'Machine Overview' page in this guide to make sure the part is definitely included in your unit.
- If it is missing, we're here to help. Simply call us on **AU: 1300 361 505 / NZ: 0800 800 900**

Why won't the accessories pick up properly?

- The accessory may be blocked: Refer to the Maintenance section (Page 6).
- The accessory may be faulty: call our Vax Careline to order a replacement: **AU: 1300 361 505 / NZ: 0800 800 900**

Why won't the vacuum cleaner pick up?

- The filters may be clogged: Refer to the Maintenance sections (Page 6).
- The Dirt Container is full or blocked: Refer to the Maintenance sections (Page 5).
- The Dirt Container may be incorrectly installed: Refer to the Maintenance sections (Page 5).
- The brushbar may be blocked. Refer to the maintenance section (Page 6).

Why will the vacuum cleaner not run?

- It may not be plugged into the electrical outlet correctly. Ensure that the plug is pushed into the electrical outlet securely.
- The electrical outlet may not be working. Check the fuse or breaker and consult an electrician.

Why is dust escaping from the vacuum?

- The filters may not be installed correctly. Refer to the Maintenance sections (Page 6).
- The Dirt container may be incorrectly installed: Remove the Dirt Container from the unit by pressing the Dirt Container Release Button (Page 6) and reattach it to the unit, ensuring it is locked firmly back into place.
- The filters may be clogged: Refer to the Maintenance sections (Page 6).

What do I do if an accessory/the unit becomes damaged or broken?

- Visit www.vax.com.au for parts and spares.
- Please call our Vax careline to purchase new spares or order a replacement:

AU: 1300 361 505 / NZ: 0800 800 900



we  to help

Don't take your machine back to the shop, simply contact us

www.vax.com.au **AU: 1300 361 505**
NZ: 0800 800 900

Other Information

Service & Help

Vax Care AU:1300 361 505 / 0800 800 900

Monday-Friday 8.00am to 5.30pm

Please make a note of the model number and serial number of your Vax before calling.
For the nearest Vax Service Agent, please call the Vax Careline or visit www.vax.com.au

Technical Specification

Voltage: 220 - 240V ~ 50 Hz

Wattage: 1400W

Capacity: 2.2 litres

Filters: Cyclone separator – wipe clean
Pre-motor filter – washable
HEPA Post-motor filter – washable

Cord Length: 5m (approx)

Weight: VMCP1400: 7.8kg
VMAT1400: 8.5kg

Subject to technical
change without notice

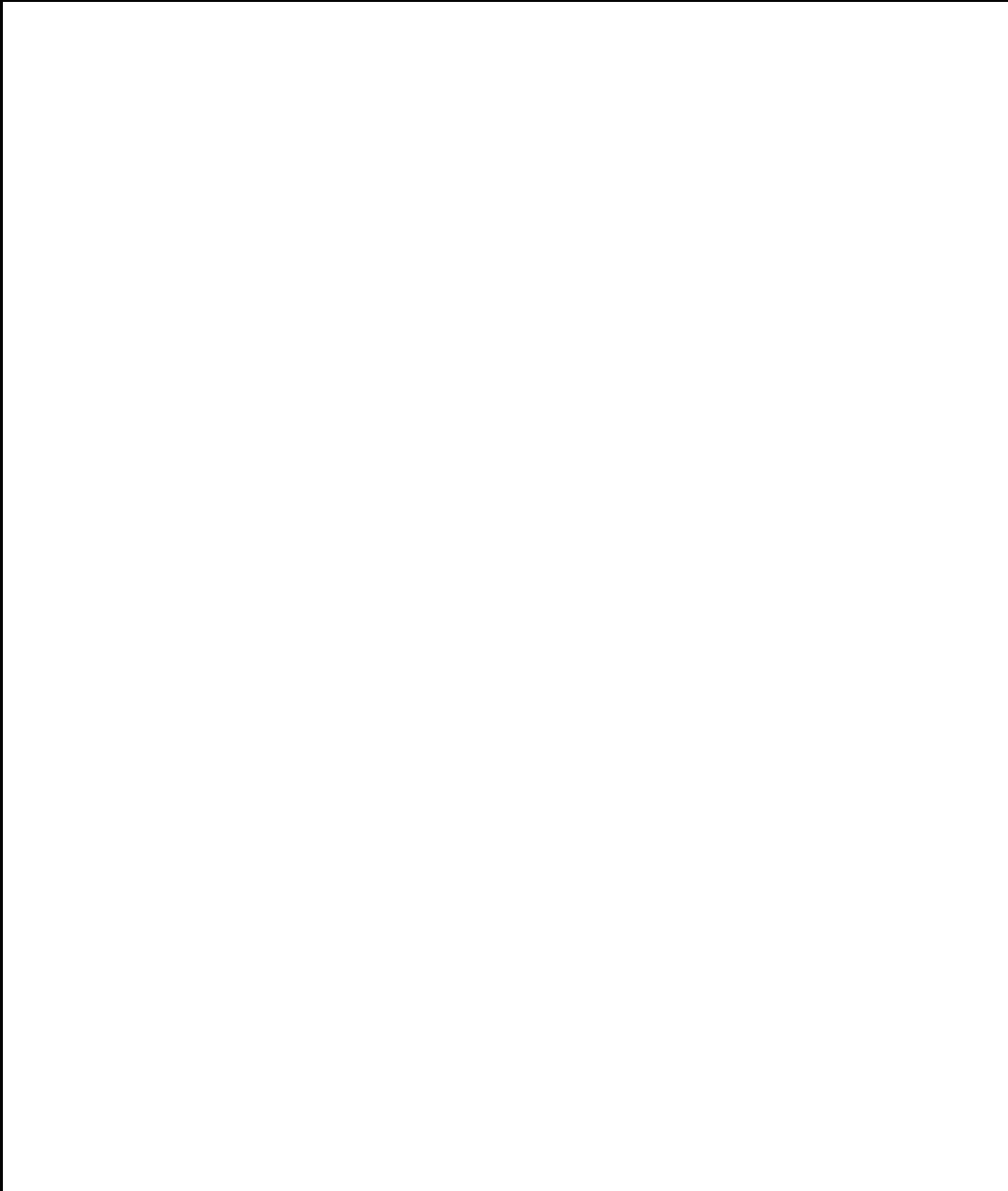


Waste electrical products should not be disposed of with household waste. Please recycle where facilities exist. Check with your Local Authority or retailer for recycling advice.

Notes



Notes



Notes





we  clean

Distributed by Techtronic Industries Pty. Ltd.
Level 1, 666 Doncaster Rd, Doncaster, Australia 3108.
www.vax.com.au. Service Line: AU: 1300 361 505 / NZ: 0800 800 900